



Phylogenetic analysis of Indian species of genus *Macrophya* Dahlbom (Hymenoptera: Symphyta; Tenthredinidae: Tenthredininae)

M.S. Saini¹ and L. Kaur²

Department of Zoology, Punjabi University, Patiala, India.

(¹email: saini20@hotmail.com)

(²email: lakhwinderkaur.kaur@gmail.com)

Abstract

Phylogenetic analysis was performed for 14 species of the genus *Macrophya* (Hymenoptera: Tenthredinidae) using the phylogenetic analysis package PAUP, based on 15 of the morphological characters most commonly used for *Macrophya* species identification. Species descriptions were derived primarily from "Indian Sawflies Biodiversity" vol. II (Saini 2007). Parsimony analysis, using equally weighted characters, produced 48 trees. The results are discussed in terms of evolutionary trends or biological maxim that "nature prefer to modify the already existing structures so as to cope with new needs."

Keywords: *Phylogenetic analysis, Macrophya, Evolutionary trends.*

Introduction

The genus *Macrophya* (Hymenoptera: Tenthredinidae) is widely distributed genus with its representatives available in almost all main regions of the globe. With regard to its affinities, it shares most of its characters with *Pachyprotasis* Hartig. Even within *Macrophya* the range of characters is so wide that time to time many of its subgenera were proposed (Malaise, 1945) and because of no distinct boundaries they all got merged (Ross, 1937 ; Gibson, 1980). Today none of its subgenus is considered to be valid (Abe & Smith, 1991). The genus *Macrophya* was first described by Dahlbom (1835) as a subgenus of *Tenthredo* Linnaeus, on the basis of body shape, length and form of antenna. He divided this subgenus into two subsections "A" and "B". Hartig (1837) applied names to these two subsections using *T. (Macrophya)* for subsection "B" and *T. (M.) (Pachyprotasis)* for subsection "A". Both of these were later recognised as valid genera by Westwood (1840).

The genus is characterized by venation as in *Pachyprotasis*, but the anal cell may have a cross vein. Malar space mostly shorter than the

diameter of an ocellus. The hind legs are strongly built, and the knees reaching and mostly exceeding the apex of the abdomen (Saini, 2007). The larval stages feed on variety of wild herbs, shrubs & trees. Generally adults feed on pollen, flower nectar or leaf juice exuding from wounds caused by strong mandibles. However, many robust species indulge in zoophagy (Cameron, 1882; Rohwer, 1913; Benson, 1938; Malaise, 1945; Naito, 1988 and Goulet, 1996).

The purpose of present study is to trace the long evolutionary history which modified generalizations into specializations of extreme form to suit the circumstances in which subsequently insects dwelled. Parsimony analysis is used to investigate phylogenetic relationships among *Macrophya* species, using data based on morphological characters most commonly used for *Macrophya* identification.

Materials and Methods

Species descriptions were derived primarily from "Indian Sawflies Biodiversity" vol.II (Saini, 2007) and the characters used in the

- 14) Metabasitarsus (0 = as long as following joints combined, 1 = longer than following joints combined). 15) Wing appearance (0 = clear, 1 = hyaline, 2 = yellowish hyaline, 3 = dusky hyaline, 4 = smoky hyaline).

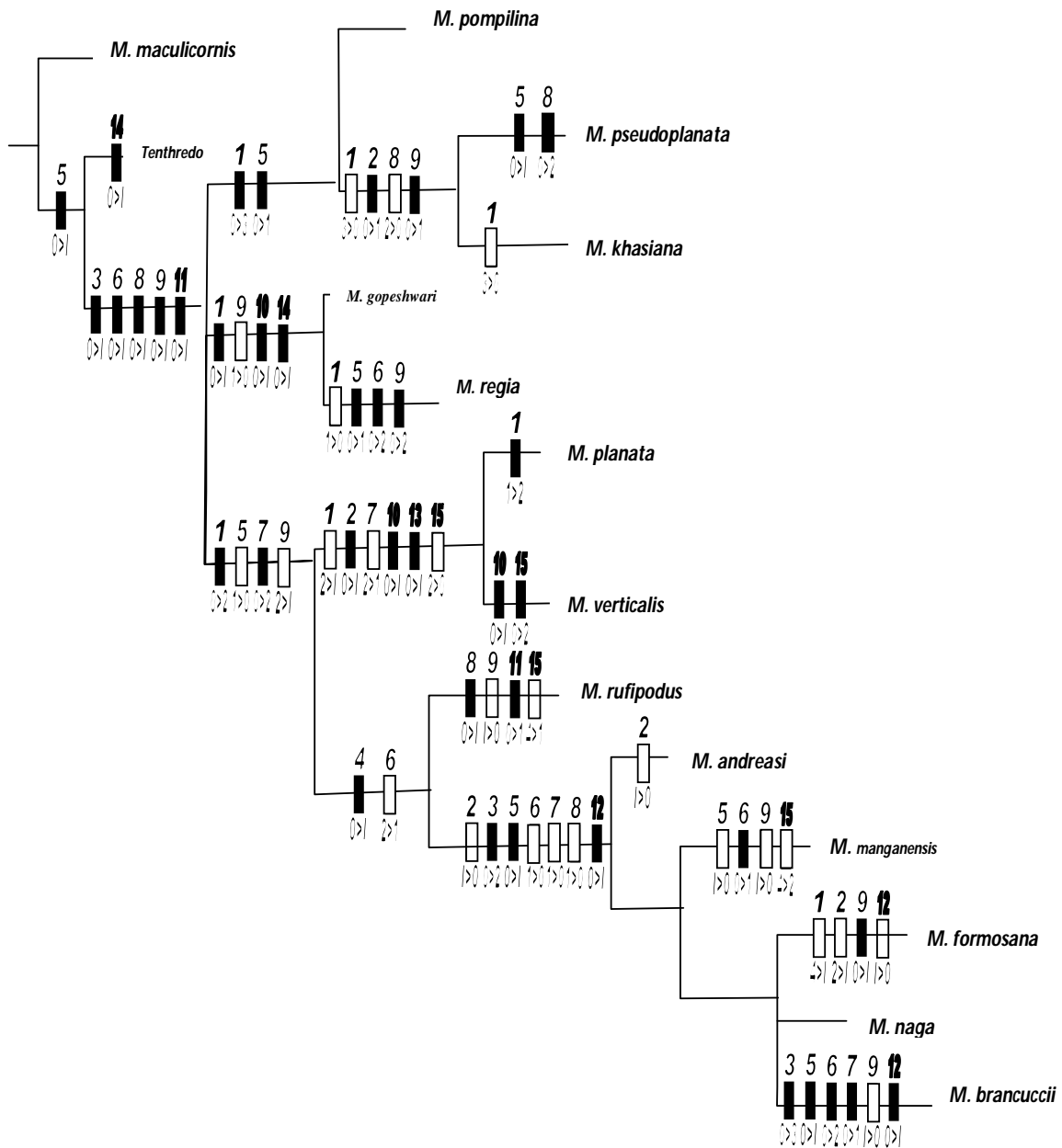


Fig. 1: Strict consensus tree for 14 species of *Macrophya* derived from the 48 most parsimonious trees calculated from the data in Table 1 ; outgroup = *Tenthredo* Linnaeus. Character of the ingroup have been optimized by fast transformation as implemented in PAUP. Character numbers are above the hashmarks; state changes are shown below with the respective primitive and derived conditions reported by a '>'. Apomorphy shown by filled hashmarks and plesiomorphy by open hashmarks.

Results

Parsimony analysis, using equally weighted characters, produced 48 most parsimonious trees (MPTs). Exact analysis by implicit enumeration (the 'i.e.' command of PAUP, which finds almost – parsimonious solutions) of the data in Table 1 resulted in formation of many cladograms which differed only at some places due to presence of more evolutionary events. Successive weighting was applied as a check of the reliability of the results. The main objective of phylogenetics is to correctly reconstruct the evolutionary history based on the observed character divergence between organisms. For estimating phylogenetic trees the most widely used PARSIMONY method (which hold the shortest tree to be the best estimate of the phylogeny) was used. Parsimony method is also called "Occam's Razor" after William of Occam, a 14th Century English philosopher who advocated this minimalist problem solving approach of "shaving away" unnecessary complications. The principle of maximum parsimony is to search for a tree that requires the smallest number of evolutionary changes to explain the differences observed among the OTU under study. As discussed by Goloboff (1991) the term parsimony is still regarded in two different ways by cladists:

- 1) as the principle of seeking the cladogram with the greatest explanatory power, given the weights the character deserve.
- 2) as the principle of seeking the cladogram with minimum length under equal weights.

Discussion

In Fig.1 *M. maculicornis* is separated from *Tenthredo* by character five and there occurs formation of derived or apomorphic character. Similarly, all characters shown in cladogram by which taxa are separated from one another and if there occurs formation of apomorphy then that character is shown by filled hashmarks and plesiomorphy by open hashmarks in the cladogram.

Tenthredo got separated from all other taxa by characters 3, 6, 8, 9 and 11 and there occurs formation of derived character and *M. pompilina*

got separated from the latter by character 1 and character 5. Character 1 and character 5 both show apomorphy. So, sign 0>3 or 0>1 shows that there is formation of a derived character from the ancestral character. *M. pseudoplanata* and *M. khasiana* got separated from *M. pompilina* by characters 1, 2, 8 and 9. Similarly, *M. pseudoplanata* got evolved by character 5 and 8 and *M. khasiana* by character 1. *M. gopeshwari* and *M. regia* got separated by characters 1, 9, 10 and 14 and *M. regia* evolved due to characters 1, 5, 6 and 9. *M. planata*, *M. verticalis*, *M. rufipodus*, *M. andreasi*, *M. manganensis*, *M. formosana*, *M. naga* and *M. brancuccii* got separated from all above taxa by characters 1, 5, 7 and 9. *M. planata* and *M. verticalis* again separated from another by characters 1, 2, 7, 10, 13 and 15. The both taxa also got separated by some characters. *M. planata* by character 1 and *M. verticalis* by characters 10 and 15. *M. rufipodus*, *M. andreasi*, *M. manganensis*, *M. formosana*, *M. naga* and *M. brancuccii* got separated from *M. planata* and *M. verticalis* by characters 4 and 6. *M. rufipodus* got evolved due to character 8, 9, 11 and 15 and similarly, all other taxa got separated from other taxa due to presence of new characters present in them. So, extremely specialized forms descended by gradual changes leads to accumulation of certain appropriate features which represents body organization acquired to become complex so as to meet requirements which also underlies the biological maxim.

References

- Abe, M. & Smith, D.R. 1991. The genus – group names of Symphyta (Hymenoptera) and their type species. *Esakia*, Fukuoka 31: 1-115.
- Benson, R.B. 1938. On the classification of sawflies (Hymenoptera, Symphyta). *The Entomologist's monthly Magazine*, 75: 110-113.
- Cameron, P. 1882. A monograph of the British phytophagous Hymenoptera vol. I. London: The Ray Society.
- Dahlbom, A.1835. *Conspectus Tenthredinidum, Siricidum, Oryssinorum, Scandinaviae, quas Hymenopterum familias. Hafinia: Kongl Swenska Wetenskaps, Academiens Handlingar* 1-16.

- Gibson, A.P. 1980. A revision of the genus *Macrophya* Dahlbom (Hymenoptera: Symphyta: Tenthredinidae) of North America. Memoirs of the Entomological Society of Canada 114: 166.
- Goloboff, P.A. 1991. Homoplasy and the choice among cladograms. Cladistics, 7: 215-232.
- Goulet, H. 1996. Revision of the Nearctic species of the arcuata group of the genus *Tenthredo* with notes on the higher classification of the Tenthredinini (Hymenoptera, Symphyta, Tenthredinidae). Contributions of the American Entomological Institute, Gainesville 29(2): 1-135.
- Hartig 1837. Die Familien der Blattwespen und Holzwespen. Berlin: Haude und Spener.
- Malaise, R. 1945. Tenthredinoidea of South-Eastern Asia with a general zoogeographical review. Opuscula Entomologica, Lund supplement 4: 1-288.
- Naito, T. 1988. Systematic position of the genus *Rocalia* (Hymenoptera, Tenthredinidae) feeding on fern spores, with description of a new species from Japan, Kontyû, 56(4): 798-804.
- Rohwer, S.A. 1913. Notes on the feeding habits of adult sawflies (Hymenoptera: Symphyta). Proceedings of the Entomological Society of Washington, 15: 148-149.
- Ross, H.H. 1937. A generic classification of the Nearctic sawflies (Hymenoptera: Symphyta). Illinois Biological Monographs, 34: 173.
- Saini, M.S. 2007. Indian Sawflies Biodiversity (Keys, Catalogue & Illustrations) vol. II. Subfamily Tenthredininae Sans Genus *Tenthredo* L. Dehradun: Bishen Singh, Mahendra Pal Singh Publishers.
- Swofford, D.L. 1993. PAUP: Phylogenetic analysis using parsimony version 3.1.1. Illinois: Illinois Natural History Survey, Chamapaign.
- Westwood, J.O. 1840. Synopsis of the Genera of British Insecta. In: Westwood, J.O. (ed.). An Introduction to Modern Classification of Insects, 2: 158.